

PURPOSE

This document defines the policy and procedures for properly triaging adult cats in foster care.

If at any time you feel your cat is having an emergency, please call the emergency clinic line at _____

SCOPE

This policy applies to all APA! fosters & clinic staff responsible for caring for and responding to medical concerns for adult cats in foster care.

POLICY

- In case of obvious emergency, call the clinic immediately at _____.
- Walk in appointments are only accepted if the clinic has determined that it is medically necessary for the cat. Non-emergency walk-ins will be presented with options for future illness appointments. They will not be admitted to the clinic immediately.
- The clinic will not make appointments for wellness purposes. Wellness clinic days will be held on a recurring basis. Refer to wellness correspondence or to your APA! foster representative for more information.

APPOINTMENT KEY

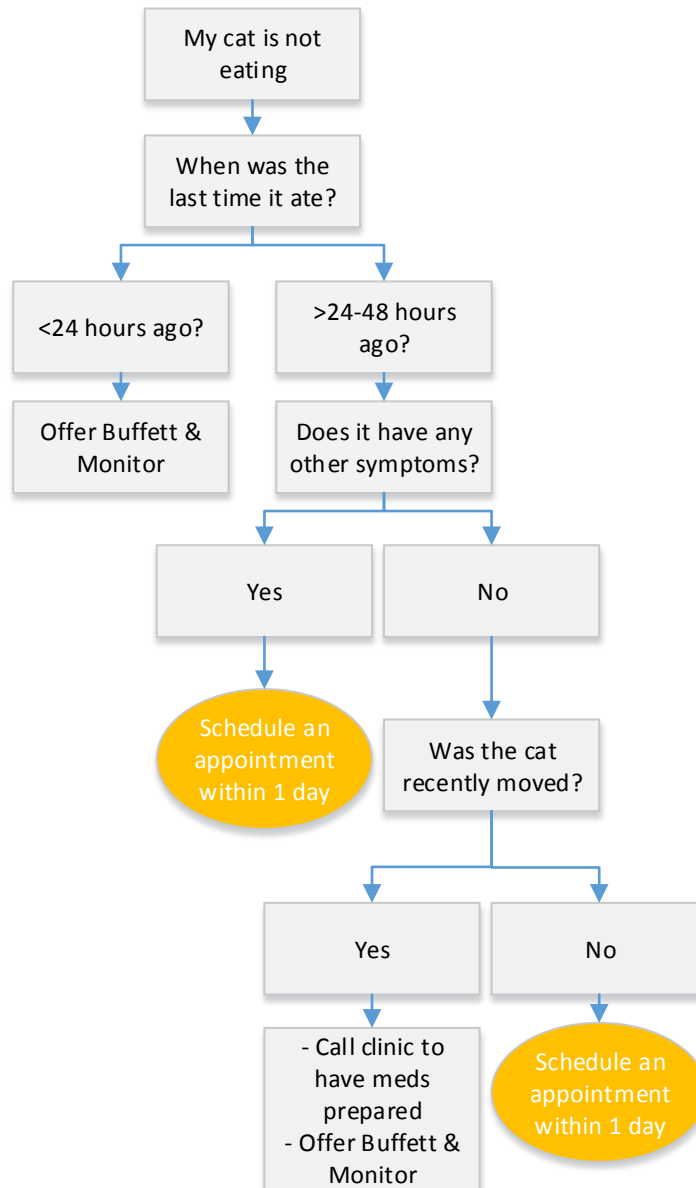


Adult Cat Foster Triage

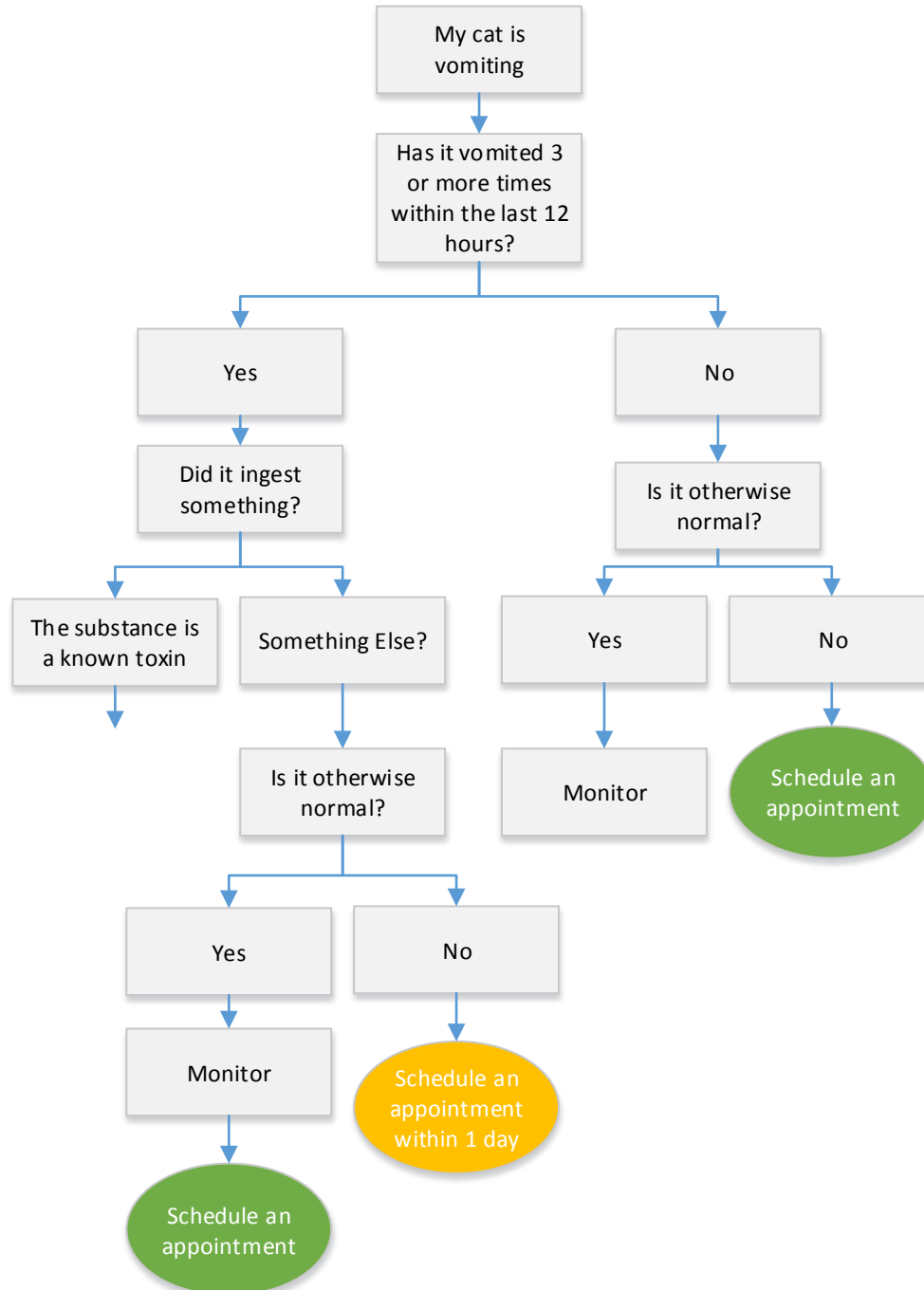
PURPOSE.....	1
SCOPE	1
POLICY.....	1
APPOINTMENT KEY	1
PROCEDURES	3
1.0 Not Eating	3
2.0 Vomiting	4
3.0 Diarrhea	5
4.0 Abnormal Breathing.....	6
5.0 Severe Congestion	7
6.0 Losing Weight	8
7.0 Eye Issues	9
8.0 Limping	10
9.0 Seizures	11
10.0 Ataxia (stumbling, swaying, drowsy, etc.).....	12
11.0 Lethargic	13
12.0 Straining in the box.....	14
13.0 Fever	15
14.0 Ear Issues	16
15.0 Skin Issues	17
16.0 Dental Issues	18
17.0 Trauma.....	19

PROCEDURES

1.0 Not Eating



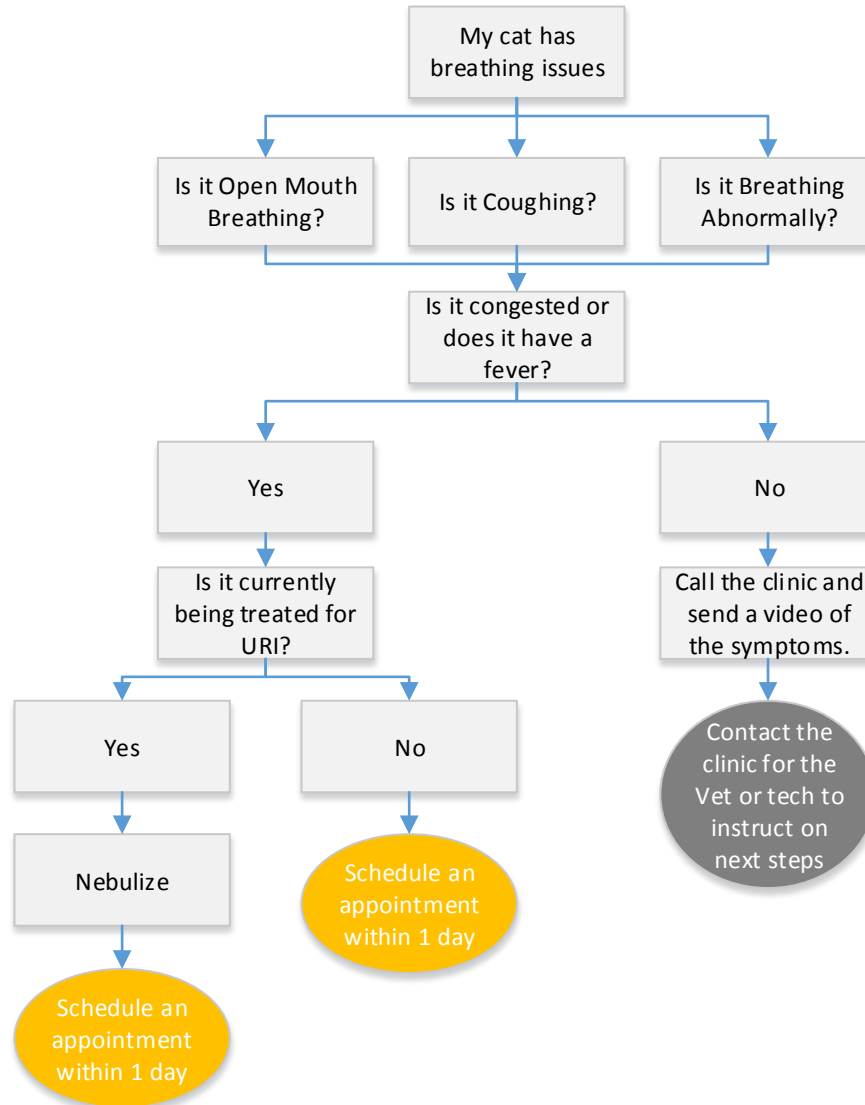
2.0 Vomiting



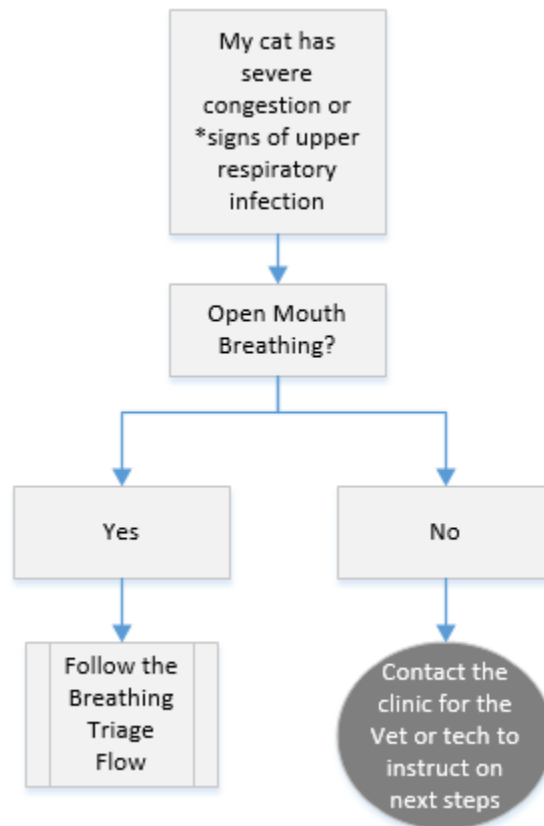
3.0 Diarrhea



4.0 Abnormal Breathing



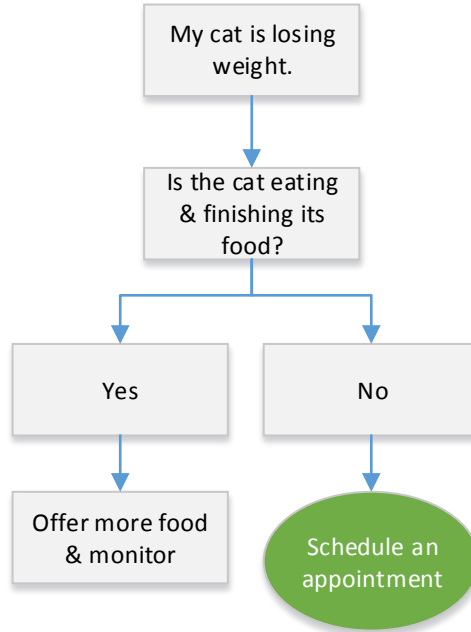
5.0 Severe Congestion



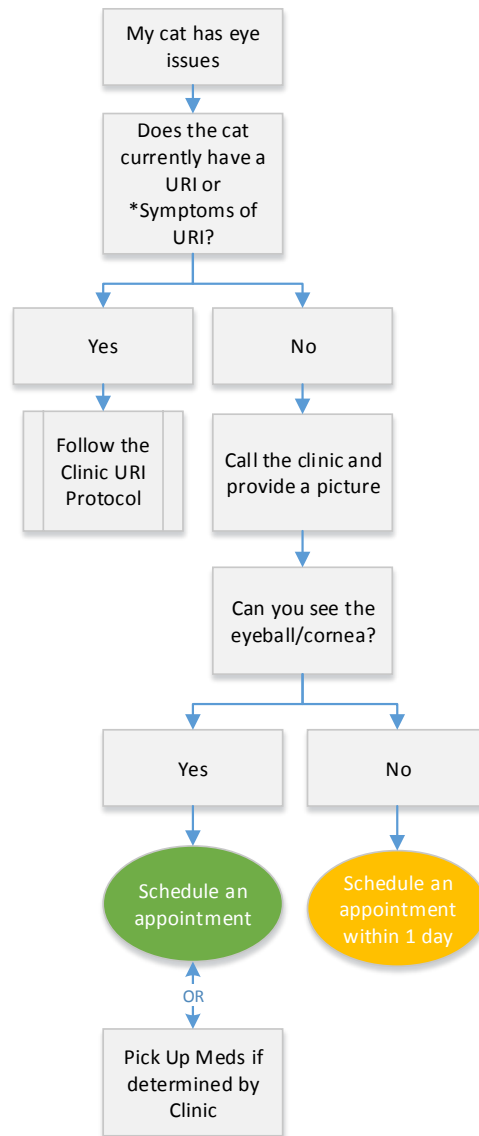
***URI symptoms:**

- Sneezing
- Congestion
- Cough
- Clear to colored nasal discharge
- Gagging, drooling
- Fever
- Decreased appetite
- Nasal and oral ulcers
- Squinting or rubbing eyes

6.0 Losing Weight



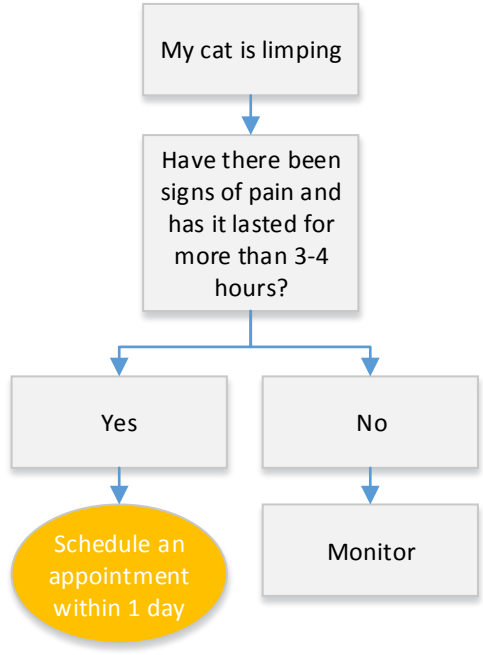
7.0 Eye Issues



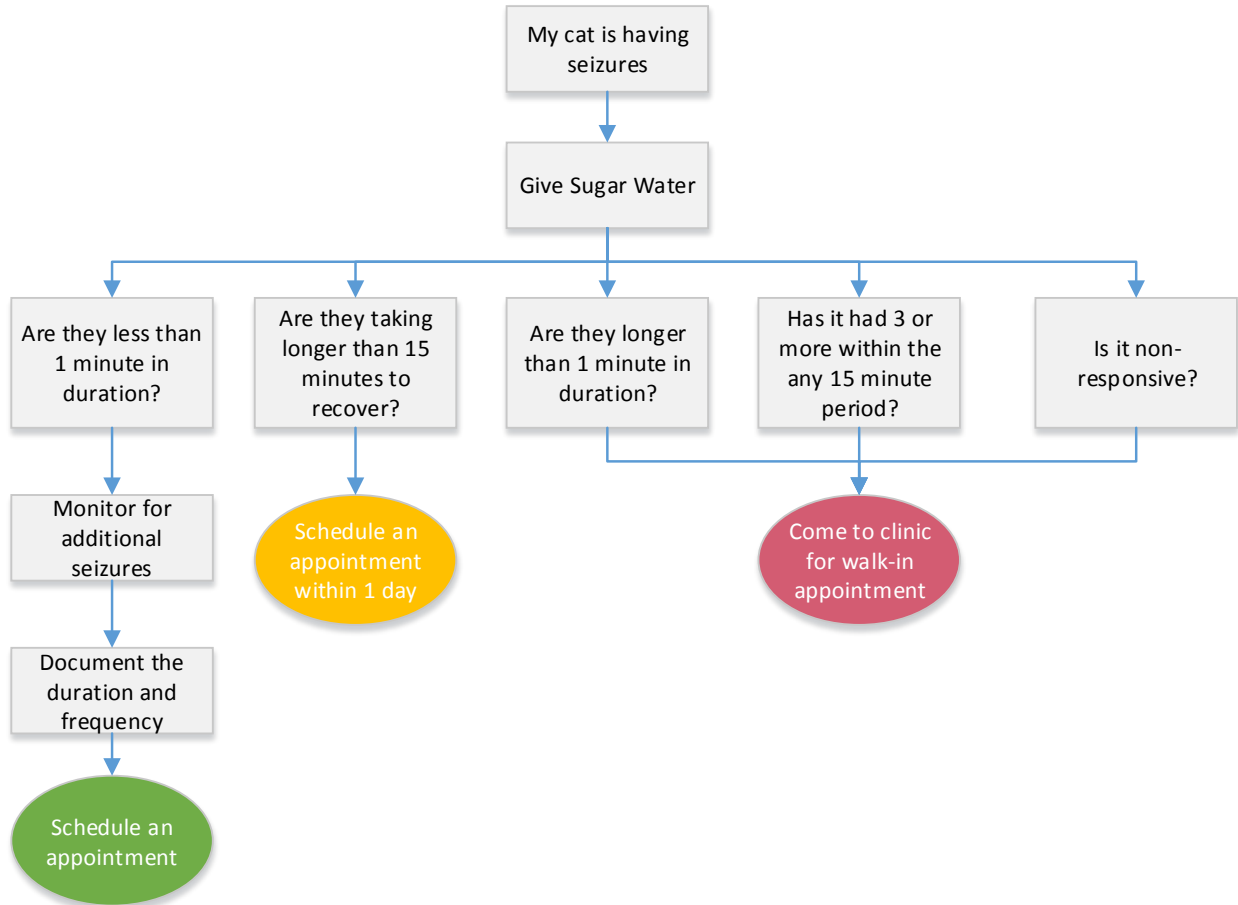
***URI symptoms:**

- Sneezing
- Congestion
- Cough
- Clear to colored nasal discharge
- Gagging, drooling
- Fever
- Decreased appetite
- Nasal and oral ulcers
- Squinting or rubbing eyes

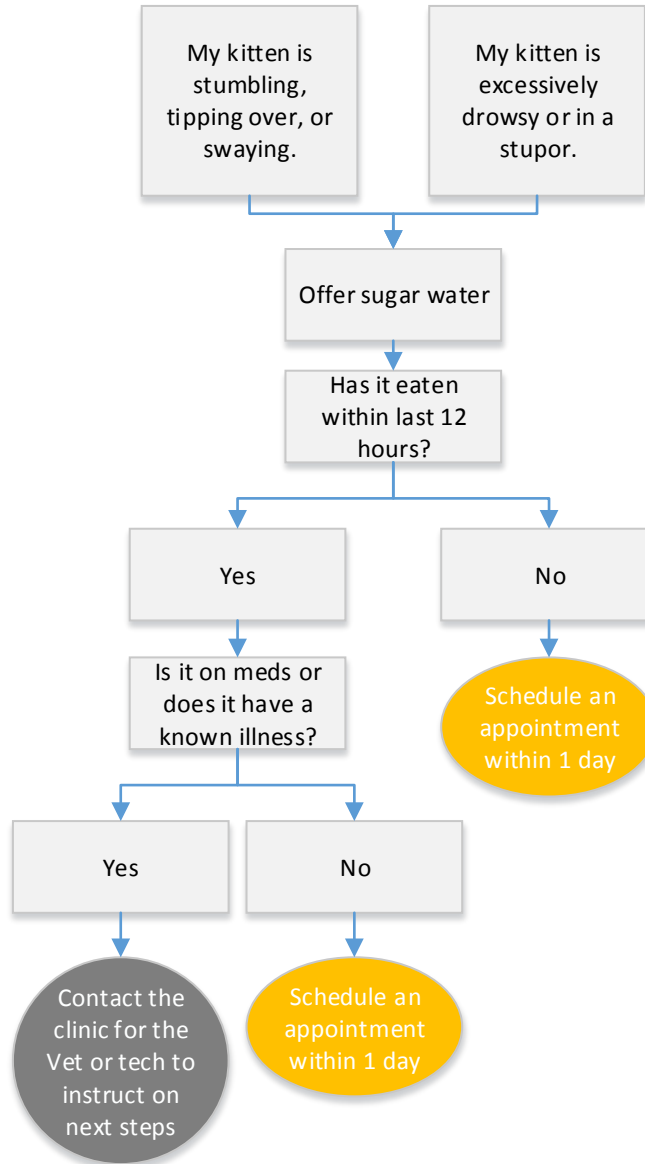
8.0 Limping



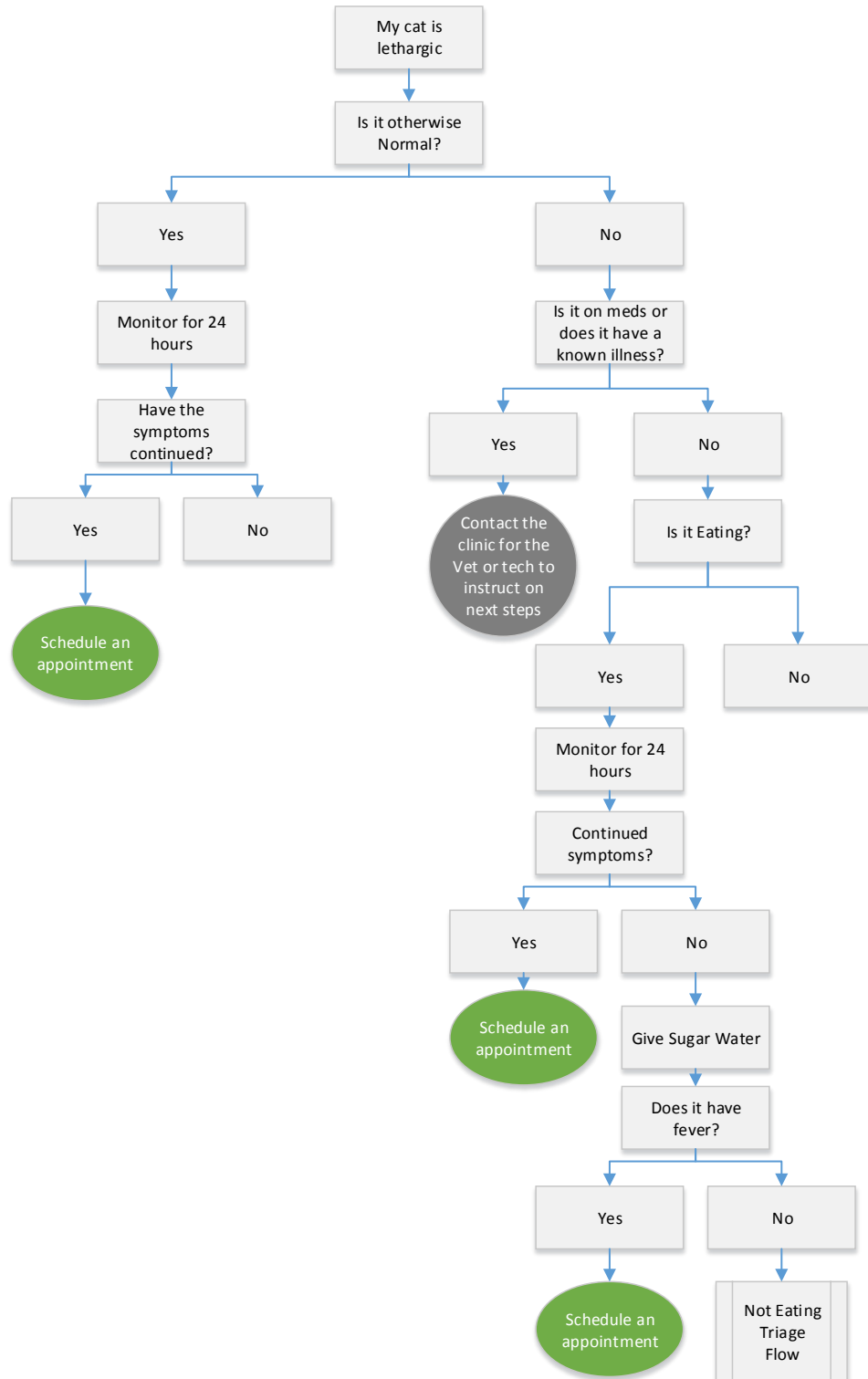
9.0 Seizures



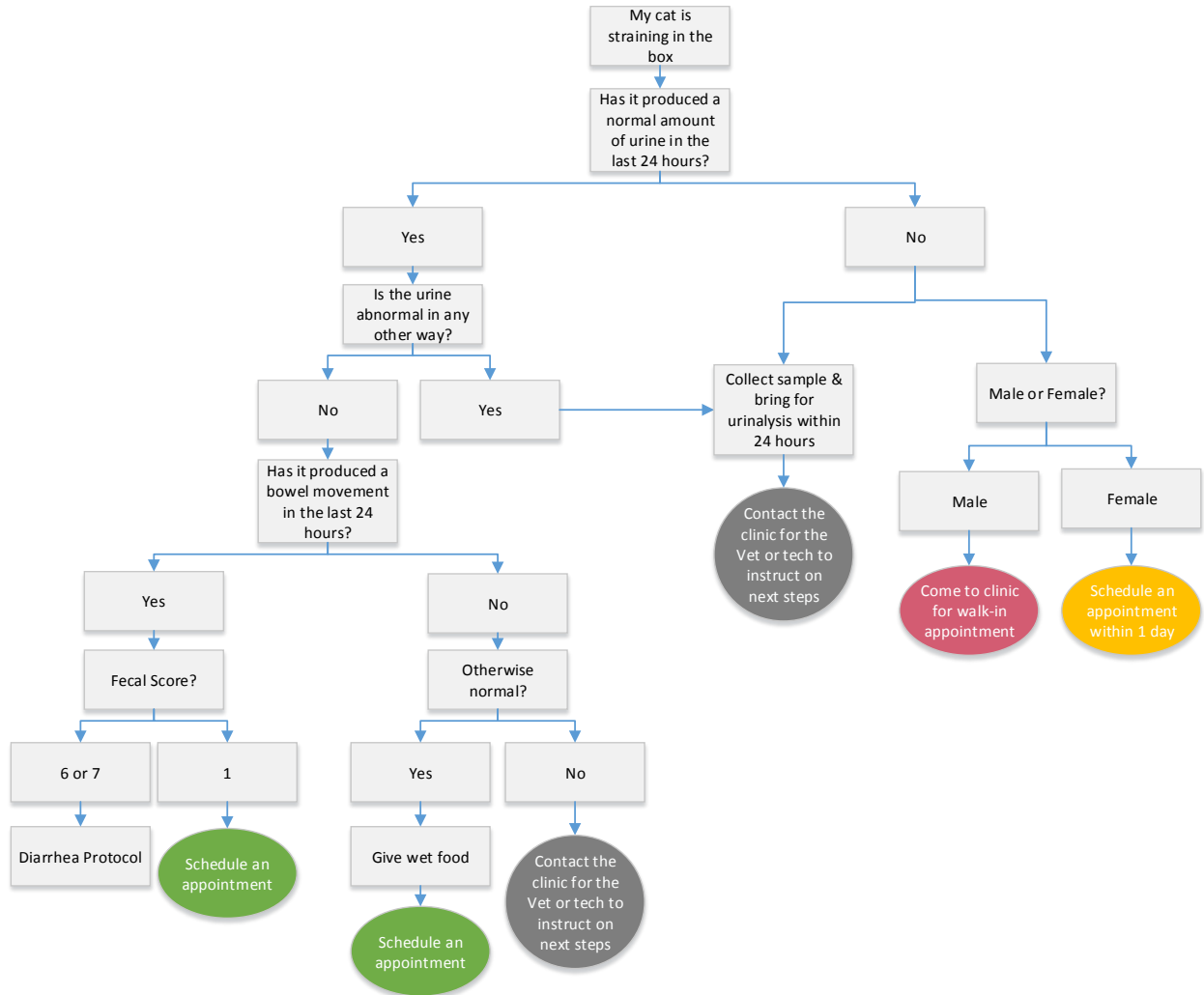
10.0 Ataxia (stumbling, swaying, drowsy, etc.)



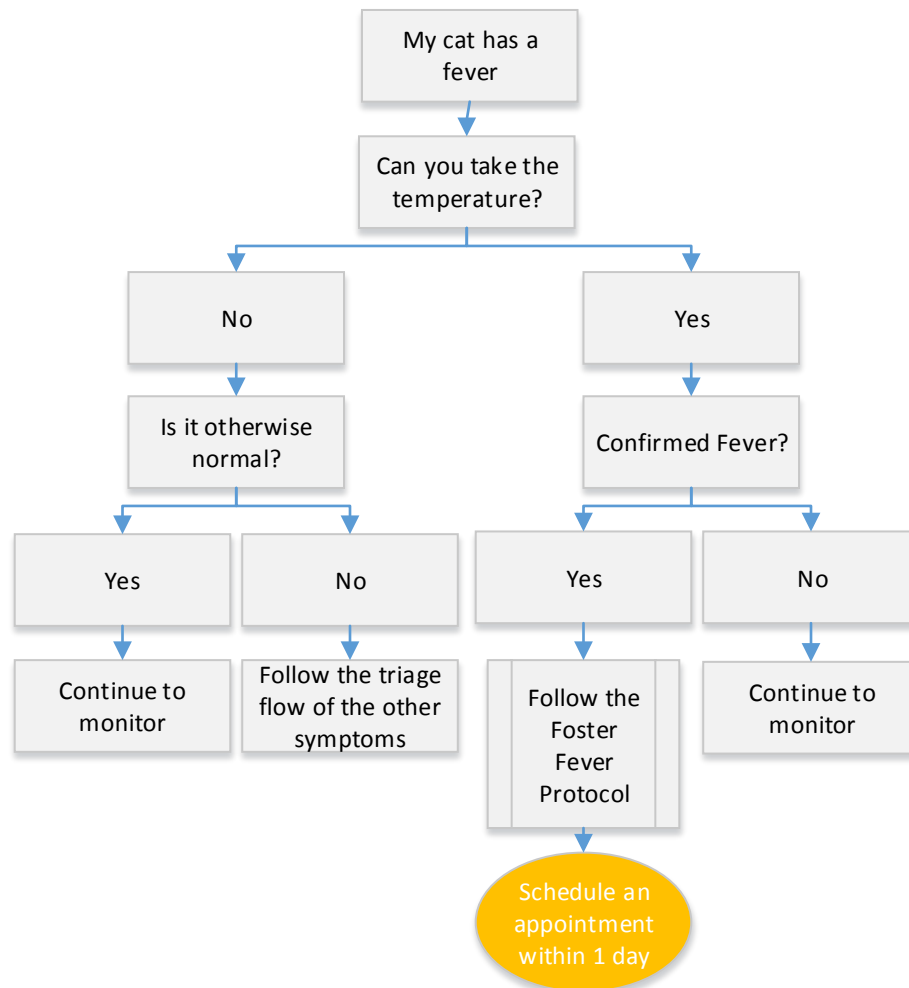
11.0 Lethargic



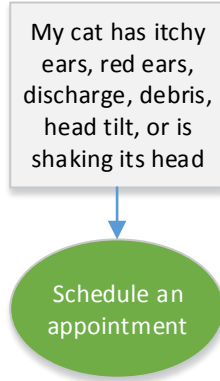
12.0 Straining in the box



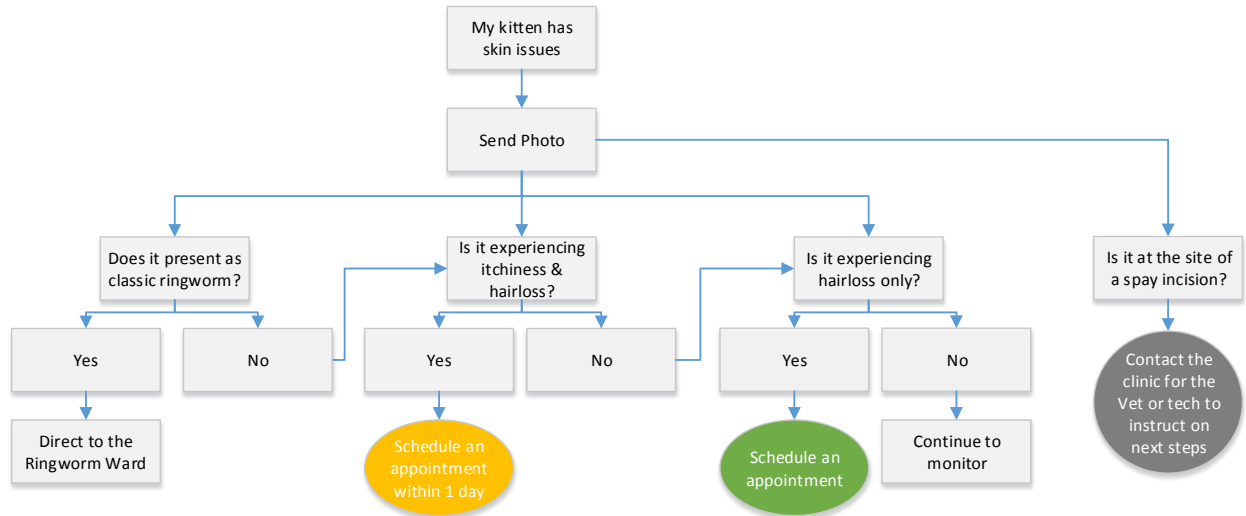
13.0 Fever



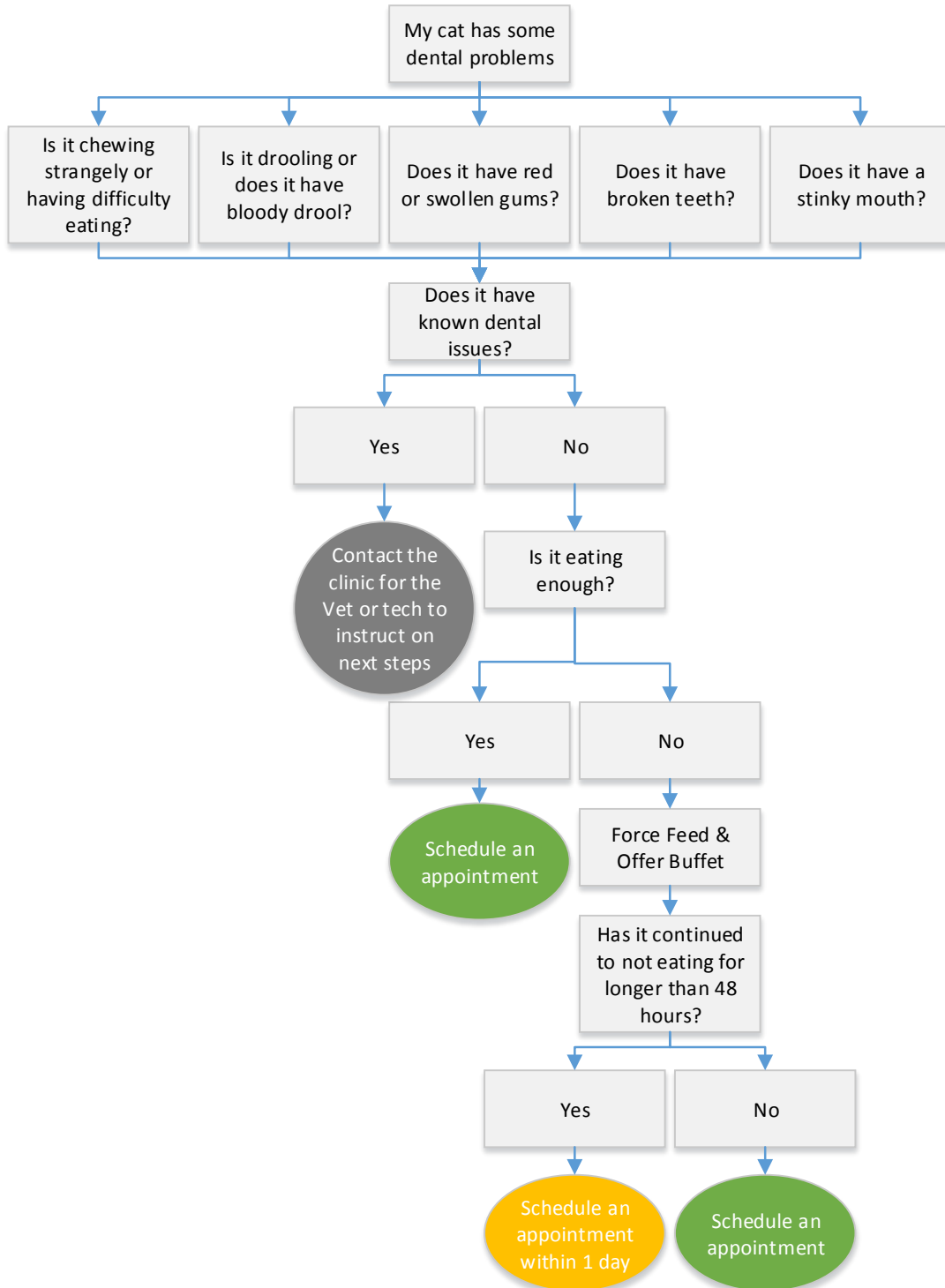
14.0 Ear Issues



15.0 Skin Issues



16.0 Dental Issues



17.0 Trauma

